

Jolyn/
place

Jolyn/
place



Tram in Rothschild Avenue, Rosebery // 1957 (City of Sydney Archives: 044265)

With the heritage and history of its industrial past evident in the development of this suburb, Rosebery is no conformist. Instead it re-invents what it means to live in an inner-city suburb; an area where character and community take prominence over anything else. Its vibrancy is palpable and has remained inherently part of its identity as a space for makers, creators and thinkers. Enjoy its burgeoning creative scene, the unique flavours of local cafes and restaurants and diverse leisure spaces that challenge the norm, but above all else the ability to step away from the noise and adopt a homely ambience.



Arthur P. Stewart Pty. Ltd. (Akubra Hats) building, Rosebery // c 1977 (City of Sydney Archives: 057514)

a link to the past

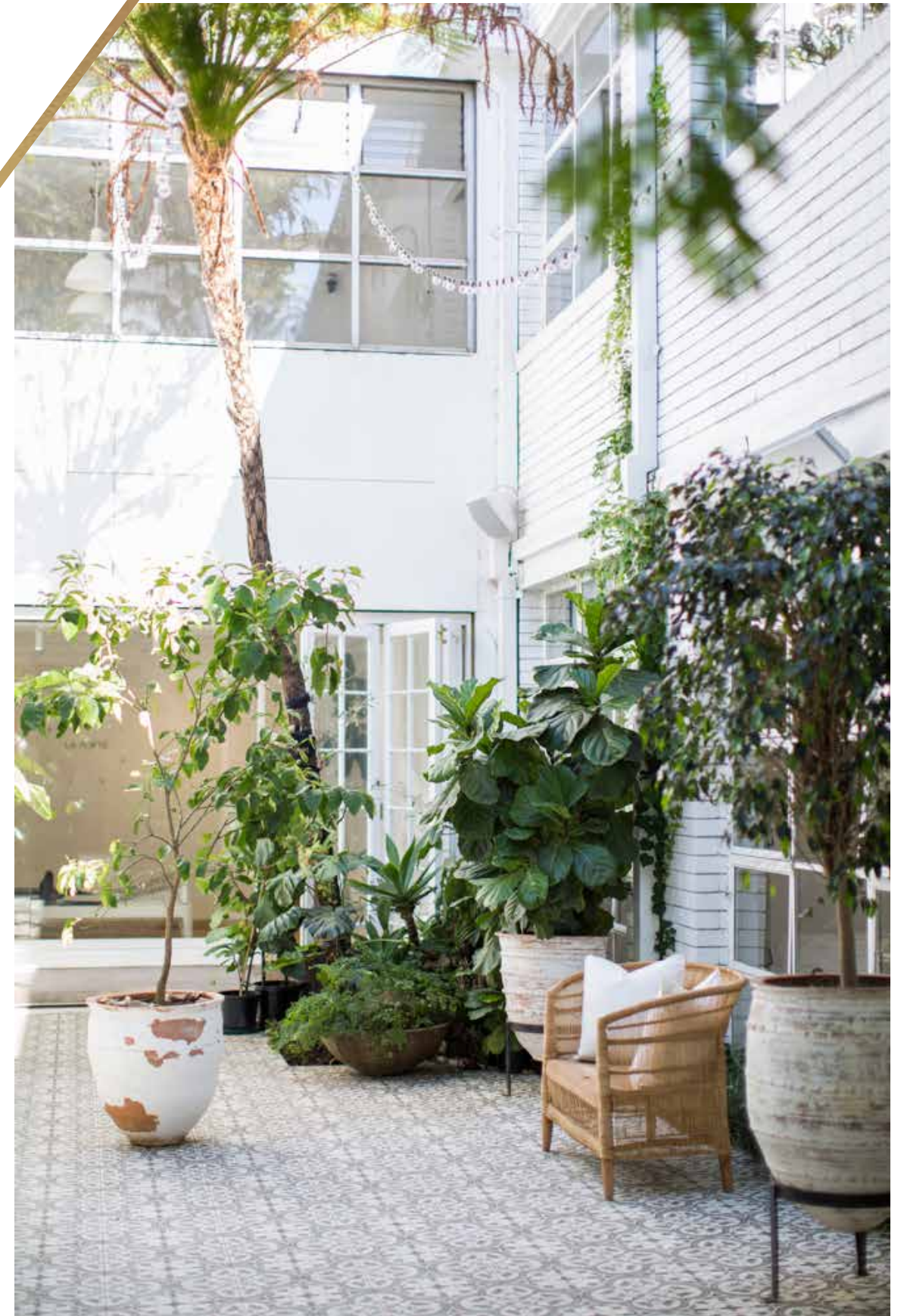
Hexham Textiles building, Rosebery // c1977 (City of Sydney Archives: 057945)



Place yourself at the juncture between new and old.

charm in the present

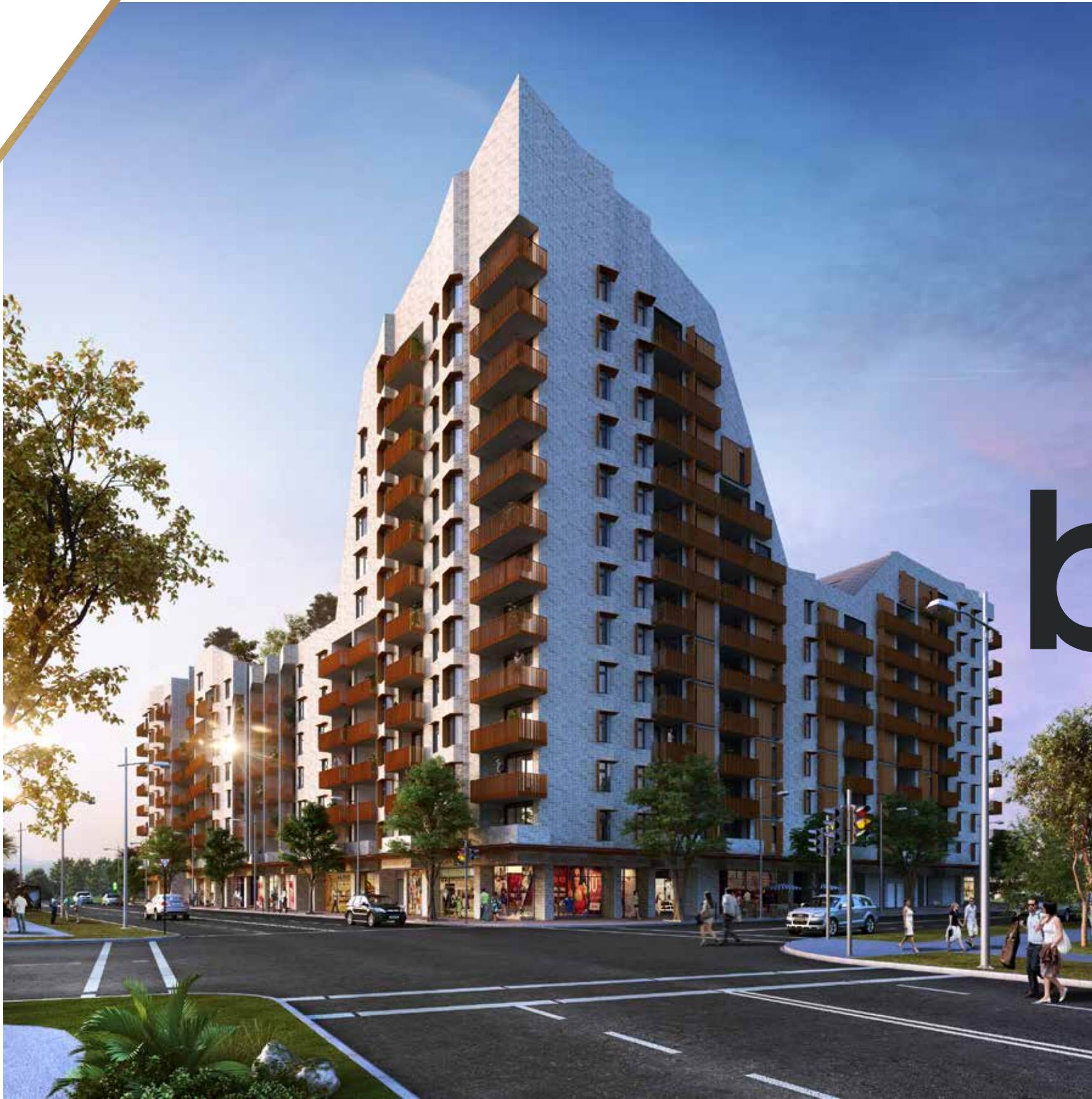
Let Rosebery's charming heritage and history be present in your everyday. Reinventing what it means to live in an inner-city suburb, Rosebery makes no compromise between your social and private self. An eclectic mix of venues take up Rosebery's large industrial spaces, holding echoes of the suburb's culturally varied working class past. Authenticity is celebrated with no two venues providing the same experience.



La Porte Space



Sydney Park



by day

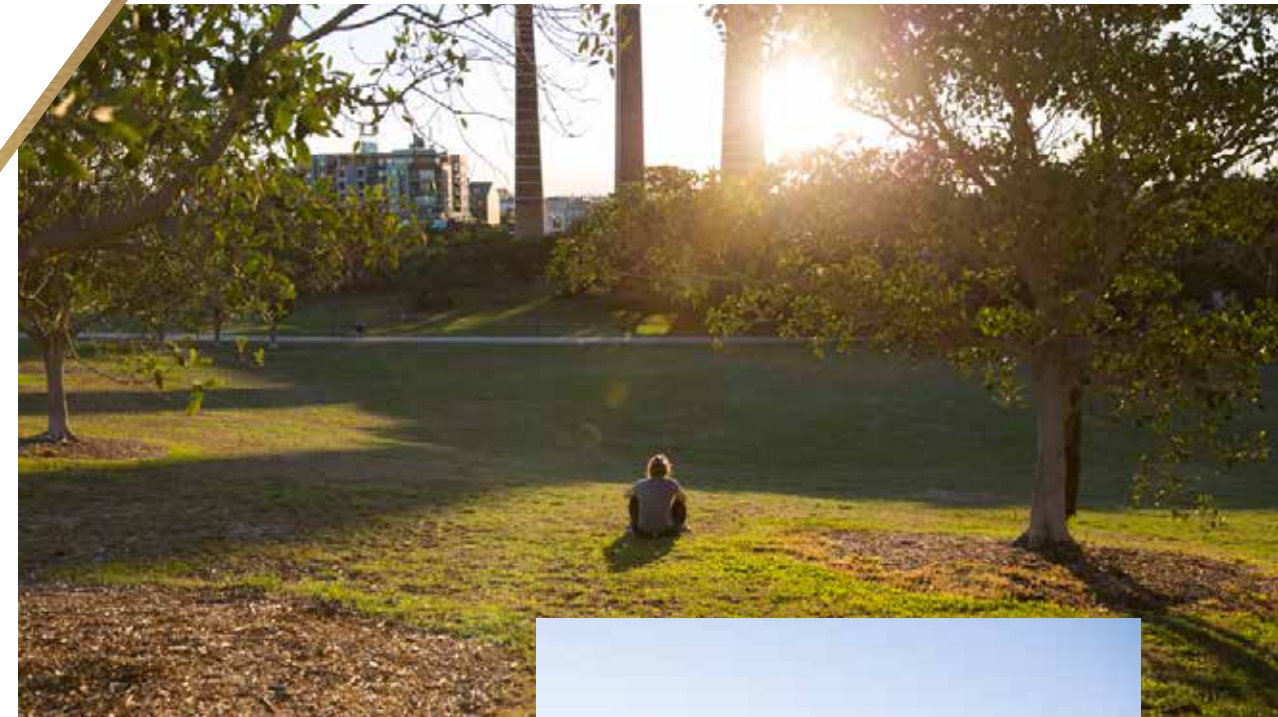
By day, enjoy a variety of Sydney's favourite cafes, sprawling parklands and fresh produce.



la porte

A short walk to La Porte, Rosebery's trendiest multipurpose space will place you amongst a collective of industry leaders in fitness, fashion and beauty. La Porte Wellness brings together meditation, nutrition, beauty and yoga with their current collaborator Fluid Form Pilates offering luxe classes to start your day right.

87-103 Epsom Rd, Rosebery



myflowerman

MyFlowerMan is a boutique florist owned and operated by Kieran Birchall. Reflected in the stunning bouquets arranged daily is a sense of the uniqueness of this area. Take a short walk to choose your arrangement or order online and indulge in same day delivery to your door.

87-103 Epsom Rd, Rosebery



sydney park

One of the most unique offerings of Rosebery is its ability to provide you with a balance of city and suburban living. Sydney Park is made up of 40 hectares of lush grass, landscaped gardens, rolling hills and picturesque wetlands. The perfect backdrop for a family picnic, leisurely stroll or a morning run.

Sydney Park Road, St Peters



wholefoods house

Fresh, certified organic food is just a four minute drive away! Wholefoods House brings together the best local, ethical and artisan producers to provide the best organic produce in Sydney! Take your time and enjoy the abundant onsite parking.

14/61 Mentmore Ave, Rosebery



East Village

by night

By night, take your pick from acclaimed restaurants and bars that take over cavernous industrial spaces.







archie rose

Feel far away from home and observe the spirit making process on a tour of the Archie Rose Distillery. The immersive experience invites you to watch their spirits being made by hand, onsite by their distillers. After the tour enjoy a drink at their bar.

85 Dunning Ave, Rosebery

gelato messina

If you're less disco and more low key join the queue at Messina's HQ for a scoop and pseudo club vibes. Best known for their weird and wonderful flavours, Messina has quickly become a global phenomenon, now at your doorstep.

58 Mentmore Ave, Rosebery



da mario

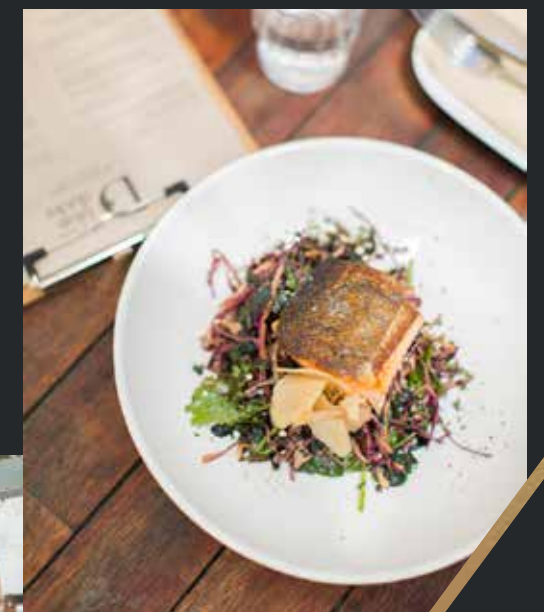
A favourite amongst locals, Da Mario epitomises laid back charm. Just a 4 minute drive from Jolyn Place, enjoy woodfired pizza and classic italian meals. The menu, which changes seasonally, is designed to be enjoyed by everybody in the family.

85 Dunning Ave, Rosebery

three blue ducks

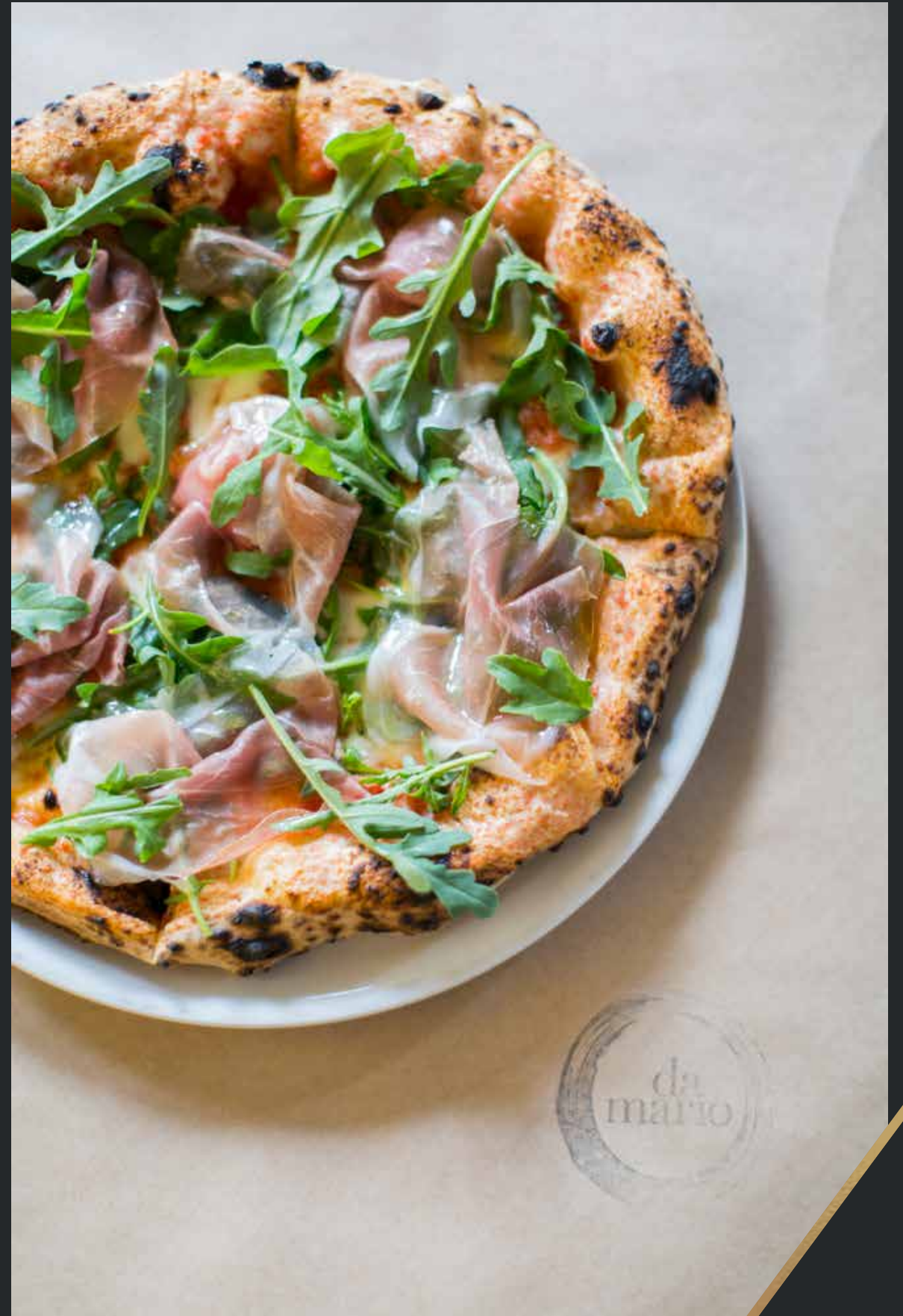
Indulge your senses at Three Blue Ducks and relish their seasonal menu of hearty meals. See the rustic history of the area come alive with the smells of meats and vegetables cooking over charcoals in their industrial warehouse space.

1/85 Dunning Ave, Rosebery





Three Blue Ducks



Da Mario



discover



Virgin Active

Rosebery presents a rare opportunity to enjoy suburban quirks without feeling far from the action. Centrally located between the creative hubs of Surry Hills, Alexandria, Redfern and Erskineville and 6km from Sydney CBD, experience life moments from work, universities, shopping centres and schools. Let Sydney be your playground.



Gardeners Road Public School



Take a short walk to enjoy local attractions or venture outside and discover somewhere new.

EAT & DRINK

- 1. The Cannery
- 2. Zeus Street Greek
- 3. 5th Earl
- 4. Da Mario
- 5. Three Blue Ducks
- 6. Archie Rose
- 7. Black Star Pastry
- 8. Gelato Messina
- 9. Grandma's Rosebery

CONVENIENCES

- 10. Green Square Railway Station
- 11. East Village Shopping Centre
- 12. Wholefoods House
- 13. Green Square Library & Plaza
- 14. Green Square University of Community Hall

RECREATION

- 15. Turruwal Park
- 16. Fluid Form Pilates
- 17. Virgin Active
- 18. The Australian Golf Club
- 19. Gunyama Park Aquatic & Recreation Centre

EDUCATION

- 20. University of NSW
- 21. Gardeners Road Public School
- 22. Waranara Early Education Centre



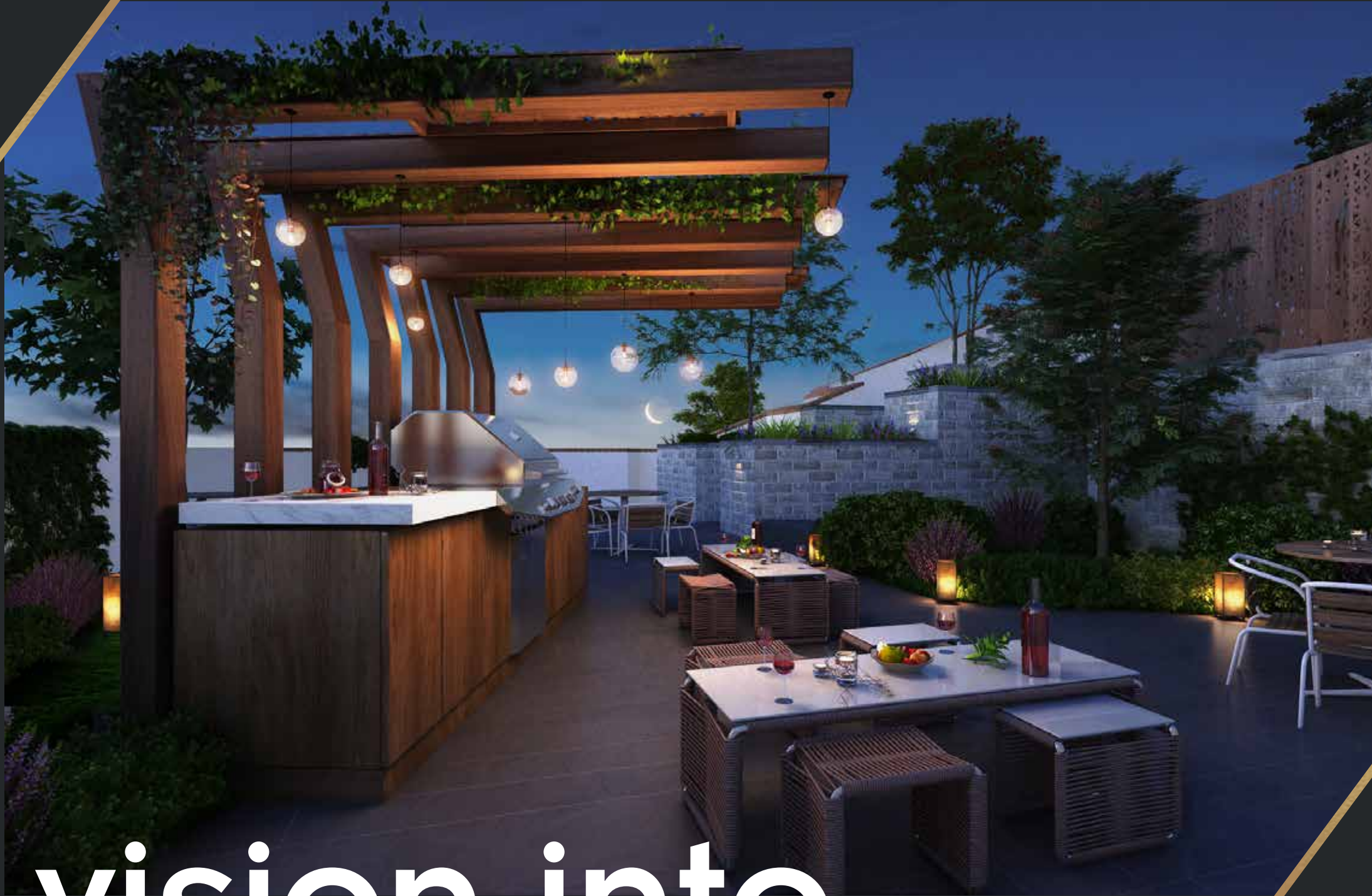
getting around

Take on Sydney with a number of public transport options at your doorstep. Take a short walk to Green Square, where you will be spoiled for choice with trains and buses moving in all directions. As one of Sydney's fastest growing and sustainable suburbs, you'll have the convenience of cycleways, getting you to Surry Hills, Sydney CBD and Sydney's Eastern Suburbs in minutes.



Green Square Train Station





vision into the future

Jolyn Place reflects
the past, present and
future of Rosebery.



outside

Made with unique Italian bricks, the facade sits neatly amongst its natural and industrial surroundings. This sense of unity within the community pervades spaces set aside for interacting with family and friends. Shared open spaces feature across the building to inspire being active outdoors. Jolyn Place recognises the importance of connectedness in modern life.







inside

Enjoy an open plan layout that makes the most out of space. Each light filled apartment is designed to be both functional for your private and social self. Make use of of your private outdoor space when entertaining or take a minute to yourself and soak up the 360 degree views. Let Jolyn Place be the perfect backdrop for your unique lifestyle.





team



Developer

The Toplace Group has a focus on building quality developments that fulfil the needs and aspirations of local communities. With a highly experience development and building team, Toplace seeks out key locations, partnering with leading architects to create buildings that provide lasting value for purchasers. To ensure quality, Toplace controls and manages the project throughout the entire development process, right to the day you move in to your new home.



La Porte Space

jolyplace.com.au

Disclaimer: Toplace does not guarantee, warrant or represent that the information contained in this advertising and marketing document is correct. Any interested parties should make their own enquiries as to the accuracy of the information. We exclude all inferred or implied terms, conditions and warranties arising out of this document and any liability for loss or damage arising there from. Designed by G Squared: gsquared.com.au.

